

T158/ T168 – Service Menu Application Guide

Released: Draft 11/22/05

Revised:

Written By: Marcia Christiansen

PRODUCT	T158, T168 - all models
---------	-------------------------

General

Key Features

The service menu is used to access and change Zone Temperature Offset, Valve Stroke Time, Fan Delay to OFF and Compressor Minimum Off Time.

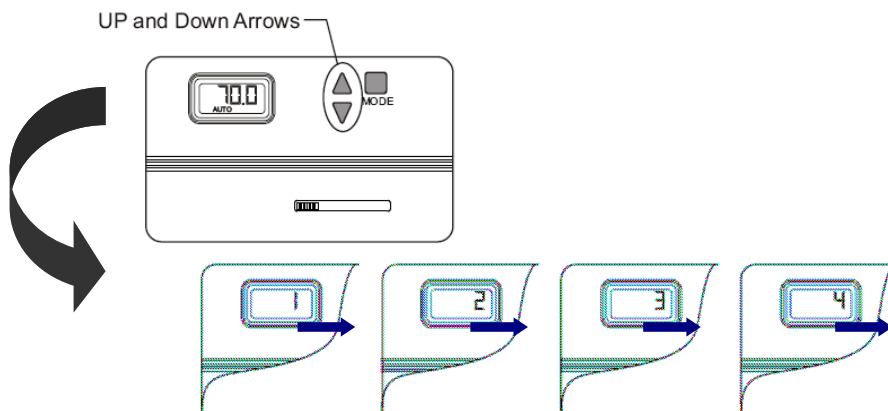
Glossary

Zone Temperature Offset	Allows the temperature control point to be calibrated (offset).
Valve Stroke Time	The length of time that it takes for a three wire floating valve to travel from Fully Closed to Fully Open.
Fan Delay to OFF	The length of time the fan will remain on after the HVAC output transitions to off.
Compressor Minimum Off Time	The length of time the Compressor will remain OFF after the Compressor output and associated outputs transitions to off.

Features

Entry to Service Menu

Holding both the UP and DOWN arrows for 5 seconds enters the service menu. While in the Service Menu, pressing both UP and DOWN arrows will step to the next Service Menu Selection.



At entry to Service Menu:

- Item 1 is displayed.
- Simultaneous presses of the UP and DOWN button will cycle to the next menu item.

In any Service Menu Item:

- A 1-second delay at a menu item will display the setting for that item.
- Pressing a single UP or DOWN button will increment the function selection.
- Simultaneously pressing the UP and DOWN buttons will cycle to the next menu item.

If no action is taken within 3-seconds, the unit will return to normal operation.

Service Menu Selections

Item #	Function	Range	Increment	Icons at Item	Default
1	Zone Temp Offset	-5.1F to 5.1F	0.1F	Digits	0F
2	Valve Stroke Time	30 sec. To 5 min.	30 Sec.	Digits	120 sec.
3	Fan Delay to OFF	T158: 0 to 10 Minutes T168: 2 to 10 Minutes	30 Sec.	Digits and OFF	T158: 0 Sec. T168: 120 Sec.
4	Compressor Minimum Off Time	30 Sec. To 10 min.	30 Sec.	Digits, HEAT and COOL	120 Sec.

Service Menus

